

Smooth  
edge  
sanding

✓ High sanding and  
working speed

✓ Safety operating  
switch button

✓ Lightweight

✓ Counter-rotating dual discs

✓ Close to corners

✓ Extremely easy to operate

✓ Efficient vacuuming

✓ Less final sanding needed

✓ Dust containment  
ready



Bona Machine  
**ELITE•FLEET**

Bona DualEdge by  **KÜNZLE & TASIN**

Dual discs for smoother edge sanding



# Bona DualEdge<sup>by</sup> KÜNZLE & TASIN

## Dual discs for smoother edge sanding

The Bona DualEdge is a steering sander that is extremely easy to operate due to the counter rotating 100 mm dual-head discs. The discs deliver forgiving sanding action, stability, high speed, and drive the dust towards the dust extractor. Bona DualEdge can be operated linearly as well as in circular motions and has a LED front light for better illumination. The revolutionary concept greatly increases working speed. For optimal dust reduction, the Bona DualEdge is compatible with Bona DCS 70 (Bona Dust Containment System).



### Application

For edge sanding of all kinds of wooden floors and parquet floors

### Key Benefits

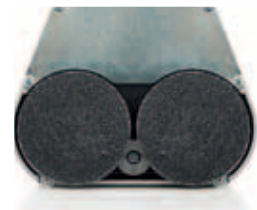
- Counter-rotating dual head discs
- Close to corners – less final sanding needed
- Very manoeuvrable
- High sanding and working speed
- Lightweight
- Efficient vacuuming
- Safety operating switch button on the handle
- Dust containment ready

### Technical Data

Discs:	2, contra-rotating
Disc diameter:	100 mm
Motor power:	1.15 kW
Total weight:	9 kg
Length sanding arm:	155 mm
Disc speed:	4500 rpm



LED lights for better visibility



Dual-head discs for smoother sanding



For optimal dust reduction use Bona DCS 70