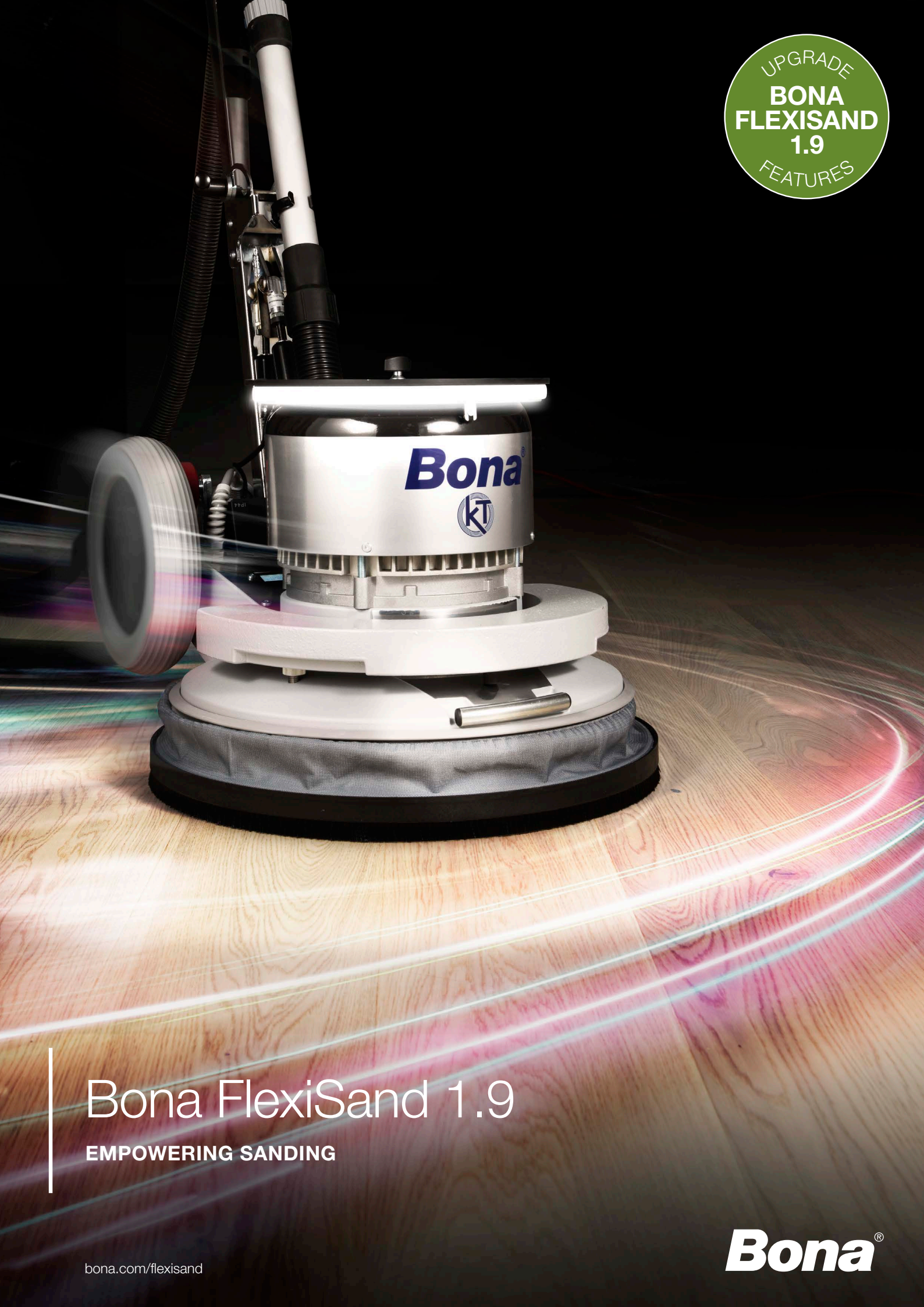


UPGRADE
**BONA
FLEXISAND
1.9**
FEATURES

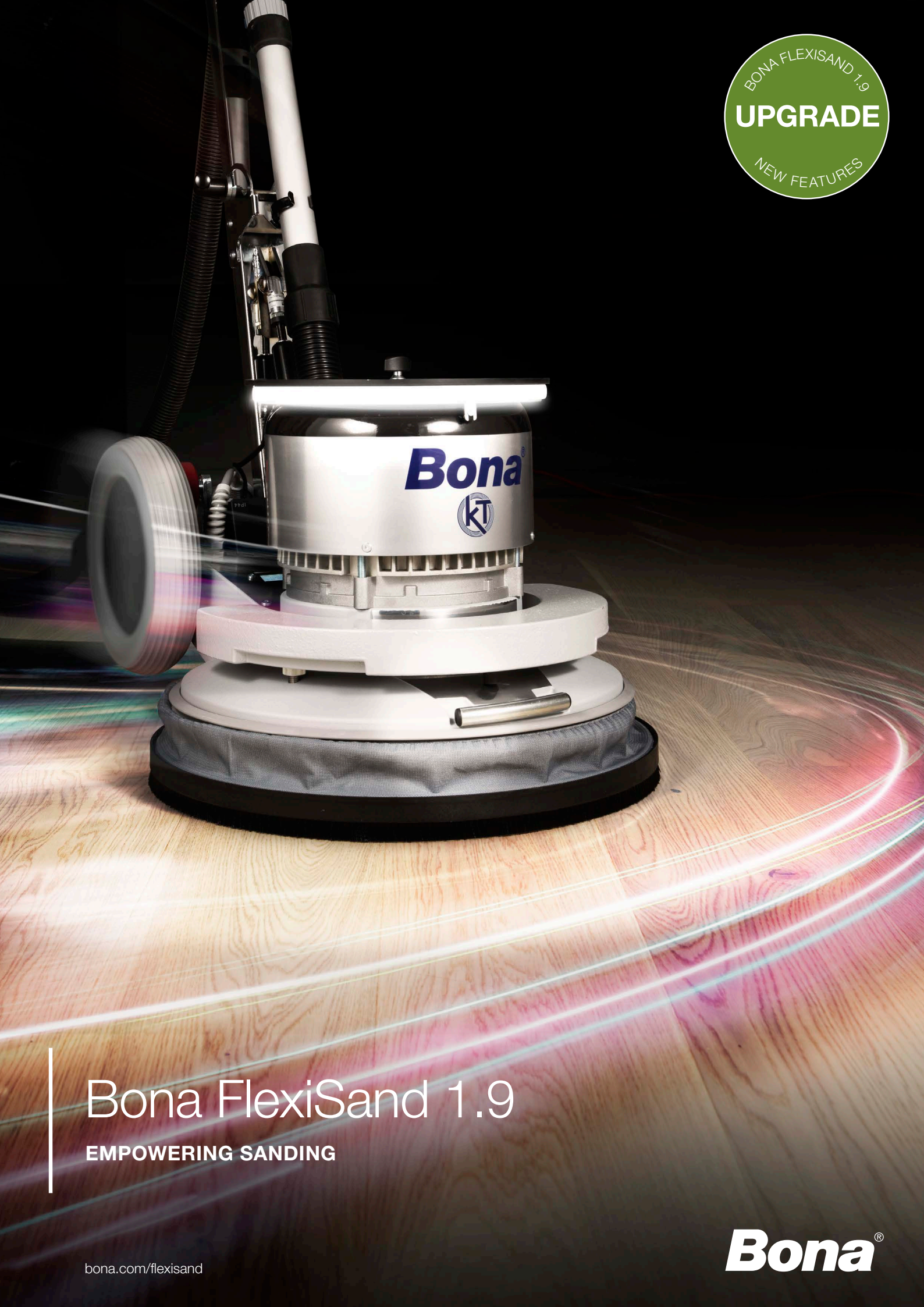


Bona FlexiSand 1.9

EMPOWERING SANDING

bona.com/flexisand

Bona[®]



Bona FlexiSand 1.9

EMPOWERING SANDING

bona.com/flexisand

Bona[®]



Bona FlexiSand 1.9

Empowering Sanding

The powerful and versatile Bona FlexiSand 1.9 is the pioneering world leader in direction-free sanding. An innovative system with a range of tools capable of various floor preparations, such as sanding down to the bare wood, fine abrading, sanding resilient surfaces, and concrete grinding. The smart, compact design makes it both capable and easy to handle.

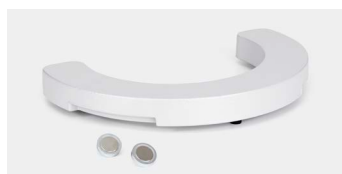
Upgraded with user-friendly features like surrounding ambient LED lights, a kickstand to avoid pressure on discs, a magnetic click-on weight and a backlit multimeter with better power supply information. Bona FlexiSand 1.9 leads the way for a truly empowered sanding experience.

LED LIGHT



Full clarity of work area.

MAGNETIC WEIGHT



Simplier handling.

KICKSTAND



Protecting discs and surface.

MULTIMETER



Better power supply information.

APPLICATION

For sanding on all kinds of wooden and resilient floors as well as grinding of concrete surfaces.

KEY BENEFITS

- Direction-free sanding
- Versatile usability
- Bare wood sanding
- Ergonomic and convenient handling
- Dust containment ready
- Complete range of applications

TECHNICAL DATA

Motor type:	1-phase
Voltage (+/- 5%):	230 V ~
Frequency:	50 Hz
Power:	1.9 kW
Rated current:	11A
Safety devices:	16A overload switch, thermal protection in the motor.
Recommended fuse:	16A
Abrasive disc speed:	147 rpm (unloaded)
Total weight:	50 kg
Diameter of disc:	407 mm (16")
Height / Width / Depth:	1170 mm / 490 mm / 640 mm